



NEO DELTA VEN **xiv**<sup>®</sup>

## New Closed System IV catheter.

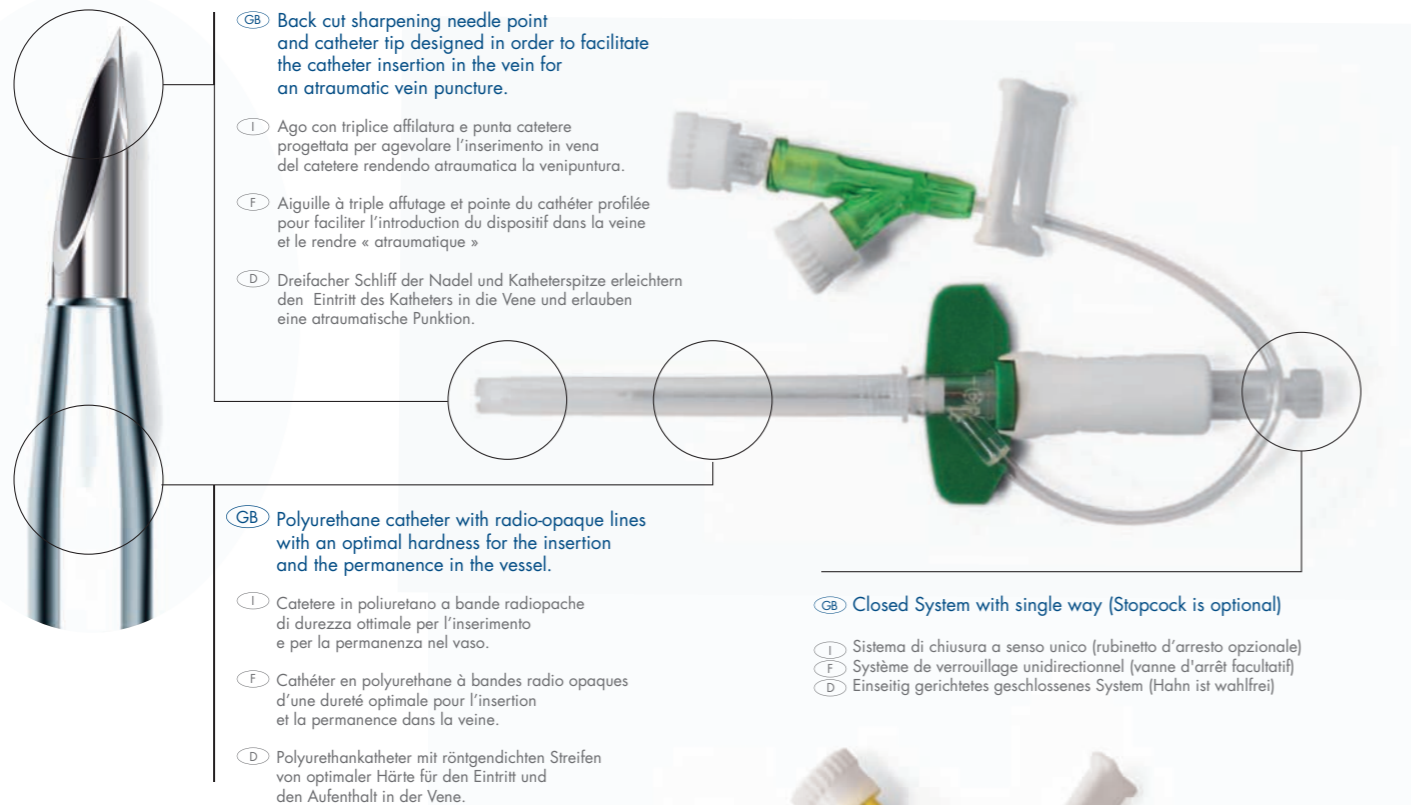
*Catetere integrato di sicurezza  
per l'accesso venoso periferico.*

*Venenverweilkanüle mit integriertem  
Sicherheitssystem für den peripheralen Zugang.*

*Cathéter intraveineux de sécurité  
avec système fermé pour l'accès périphérique.*

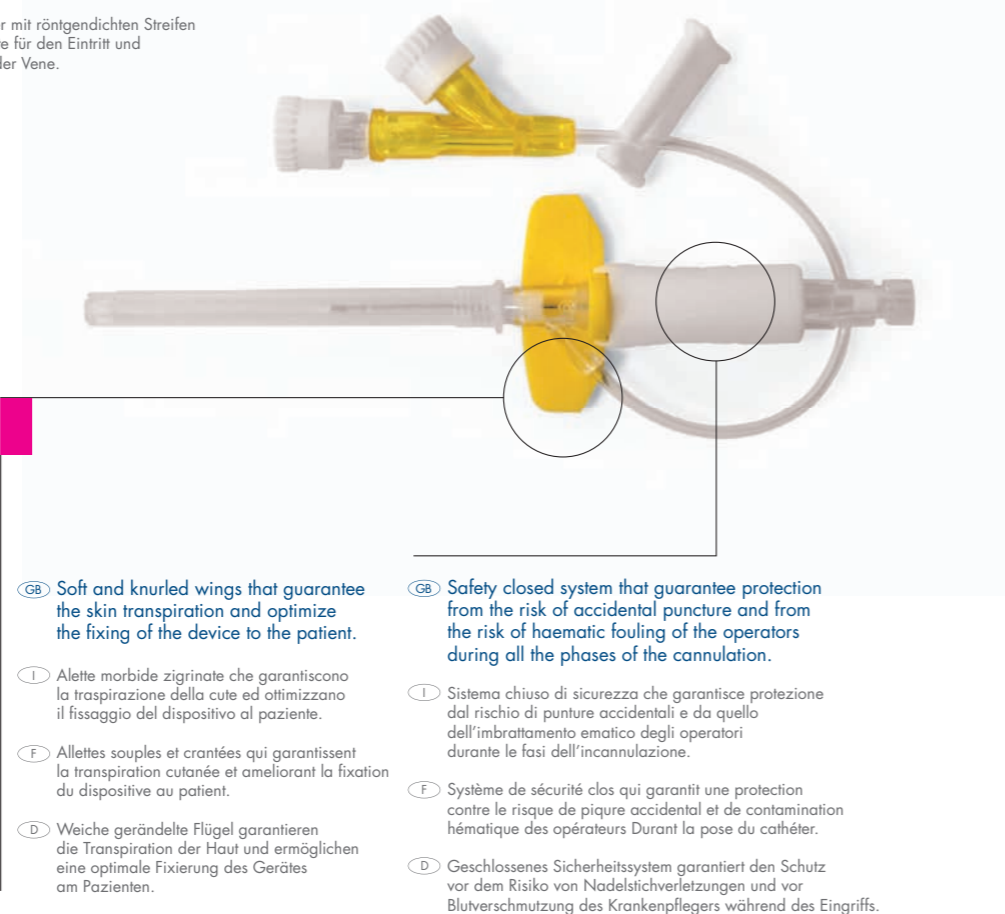
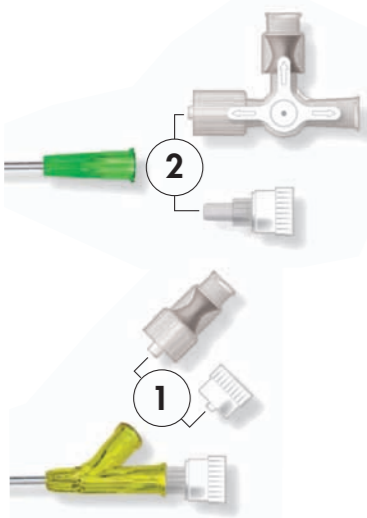
# Neo Delta Ven Xiv Closed System

Neo Delta Ven Xiv Sistema Chiuso  
Neo Delta Ven Xiv Système fermé  
Neo Delta Fr Xiv Geschlossenes System



## Neo Delta Ven Xiv is available in the following versions:

- with one way connection and lipid resistant polycarbonate three ways stopcock with needle less valve (1)
- with Y two ways connection and needle less valve (2)



## Integrated catheter with one way connection

Integrated catheter with one way connection and with three ways stopcock and needle less valve

Code	Description	Gauge	Catheter O.D. (mm)	Catheter length (mm)	Flow (ml/min)	Box (pcs)	Carton (pcs)
3615122	One way connection	24	0,74	19	24	25	100
3618122	One way connection with stopcock and valve	24	0,74	19	24	20	80
3625122	One way connection	22	0,90	19	37	25	100
3628122	One way connection with stopcock and valve	22	0,90	19	37	20	80
3635122	One way connection	22	0,90	25	31	25	100
3638122	One way connection with stopcock and valve	22	0,90	25	31	20	80
3645122	One way connection	20	1,00	25	47	25	100
3648122	One way connection with stopcock and valve	20	1,00	25	47	20	80
3655122	One way connection	20	1,00	32	42	25	100
3658122	One way connection with stopcock and valve	20	1,00	32	42	20	80
3665122	One way connection	20	1,00	45	38	25	100
3668122	One way connection with stopcock and valve	20	1,00	45	38	20	80
3675122	One way connection	18	1,30	25	65	25	100
3678122	One way connection with stopcock and valve	18	1,30	25	65	20	80
3685122	One way connection	18	1,30	32	63	25	100
3688122	One way connection with stopcock and valve	18	1,30	32	63	20	80
3695122	One way connection	18	1,30	45	58	25	100
3698122	One way connection with stopcock and valve	18	1,30	45	58	20	80

## Integrated catheter with Y connection

Integrated catheter with Y connection and with needle less valve

Code	Description	Gauge	Catheter O.D. (mm)	Catheter length (mm)	Flow (ml/min)	Box (pcs)	Carton (pcs)
3610122	Y connection	24	0,74	19	24	25	100
3613122	Y connection with valve	24	0,74	19	24	25	100
3620122	Y connection	22	0,90	19	37	25	100
3623122	Y connection with valve	22	0,90	19	37	25	100
3630122	Y connection	22	0,90	25	31	25	100
3633122	Y connection with valve	22	0,90	25	31	25	100
3640122	Y connection	20	1,00	25	47	25	100
3643122	Y connection with valve	20	1,00	25	47	25	100
3650122	Y connection	20	1,00	32	42	25	100
3653122	Y connection with valve	20	1,00	32	42	25	100
3660122	Y connection	20	1,00	45	38	25	100
3663122	Y connection with valve	20	1,00	45	38	25	100
3670122	Y connection	18	1,30	25	65	25	100
3673122	Y connection with valve	18	1,30	25	65	25	100
3680122	Y connection	18	1,30	32	63	25	100
3683122	Y connection with valve	18	1,30	32	63	25	100
3690122	Y connection	18	1,30	45	58	25	100
3693122	Y connection with valve	18	1,30	45	58	25	100

**GB** One way connection  
One way connection with stopcock and valve

**I** Raccordo mono via  
Raccordo mono con rubinetto e valvole

**F** Avec raccord une voie  
Avec raccord une voie, robinet et valve

**D** Mit Einwegverbindung  
Mit Einwegverbindung und Hahn mit Ventil

**GB** Y connection  
Y connection with valve

**I** Raccordo a Y  
Raccordo a Y con valvole

**F** Avec raccord en Y  
Avec raccord en Y et valve

**D** Mit Y - Verbindung  
Mit Y - Verbindung und Ventil

24 22 20 18

NEO DELTA VEN Xiv®

**DELTA MED**  
MEDICAL DEVICES  
Solutions for Health

Since 1993 our mission has been to develop and manufacture high quality items to guarantee the best of safety, comfort and convenience.

The high technology and safety of our products and an efficient customer service are our key words.

Our production is highly robotized in a controlled room ISO class 8.

All Delta Med products comply with the EU medical device directive.



CERTIFICATIONS:

EN ISO 9001  
EN ISO 13485  
13485:2003 CMDCAS



Establishment Registration Number: 3006846316

The EC Certificate for Medical Devices produced by Delta Med is issued by TÜV-SÜD Product Service for the O.R. division and by Istituto Superiore Sanità for the I.V.C. division.



DELTA MED SPA Unipersonale  
Via Guido Rossa 20 - 46019 - VIADANA (MN)  
Tel. 0375/785915 - Fax. 0375/785201  
[www.deltamed.it](http://www.deltamed.it) - [info@deltamed.it](mailto:info@deltamed.it)