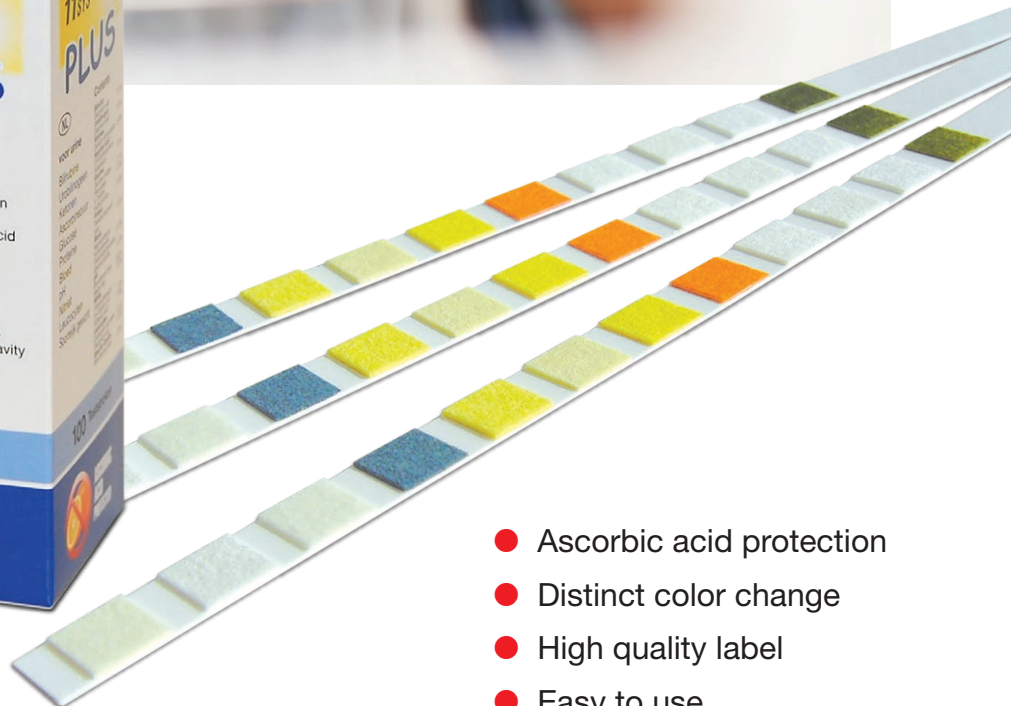


# CombiScreen® PLUS



- Ascorbic acid protection
- Distinct color change
- High quality label
- Easy to use

## Urine test strips – a meaningful routine check



Urine test strips are easy to handle and provide fast, cost effective and reliable information of changes in the organism. The CombiScreen® urine test strip is used in routine for screening of the following diseases:



- Diseases of the kidneys and the urogenital tract (e.g. urinary tract infections, stones, tumours, glomerular nephritis, pyelonephritis)  
*Parameter: Nitrite, Proteine, Leucocytes*



- Metabolic disorders (diabetes mellitus)  
*Parameter: Glucose, Ketones*

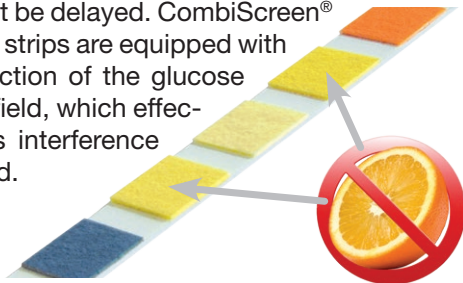
- Liver and haemolytic diseases  
*Parameter: Billirubin, Urobilinogen*

The results are used as the basis for further laboratory tests.

### ● Excellent ascorbic acid protection for glucose and blood pad

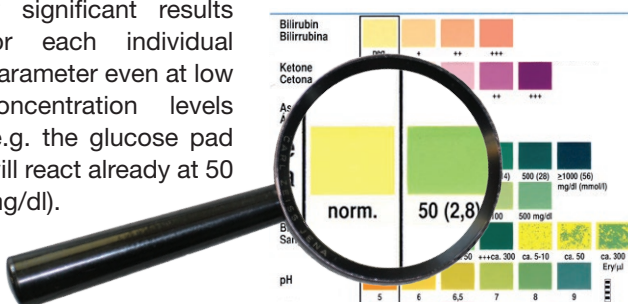
Ascorbic acid (Vitamin C) is absorbed by food, nutritional supplements and as a preservative in the body. Excess ascorbic acid is excreted; nevertheless, significant ascorbic acid levels in the urine is observed in a high proportion of the population.

This can affect the sensitivity of conventional tests and cause false negative results at high concentration levels. Due to that fact, necessary diagnostic or therapeutic actions might be delayed. CombiScreen® PLUS urine test strips are equipped with an active protection of the glucose and blood test field, which effectively precludes interference by ascorbic acid.



### ● Distinct color changes in the clinically relevant range

In order to obtain clear results a distinct color change in the clinically relevant range is required (e. g. our pads change color from yellow to green to indicate a positive sample whereas other strips will change shades of the same color). The increased sensitivity of our pads identifies clinically significant results for each individual parameter even at low concentration levels (e.g. the glucose pad will react already at 50 mg/dl).



### ● High quality water resistant label made with real color printing

In contrast to the often used 4-color printing, which does not allow to reproduce all colors exactly, the water resistant CombiScreen® label is produced by a complex lacquer printing process. As a result, the label is optimally matching to the colors of the test pads, which guarantees an exact visual evaluation.

The size of the test pads and distance between test pads on the label is the same as on the test strip.



### ● Easy to use

The CombiScreen® urine test strips have a consistent reading time of 60 seconds (up to 120 for leucocytes). Due to the long handle end the test pads are not touched, which ensures a hygienic evaluation of the urine test strips.

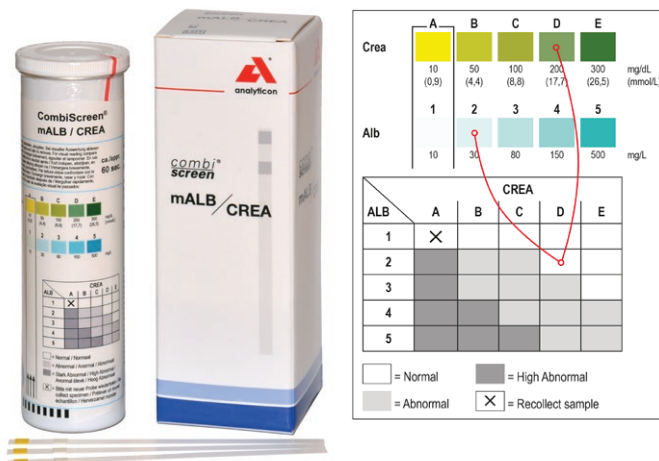
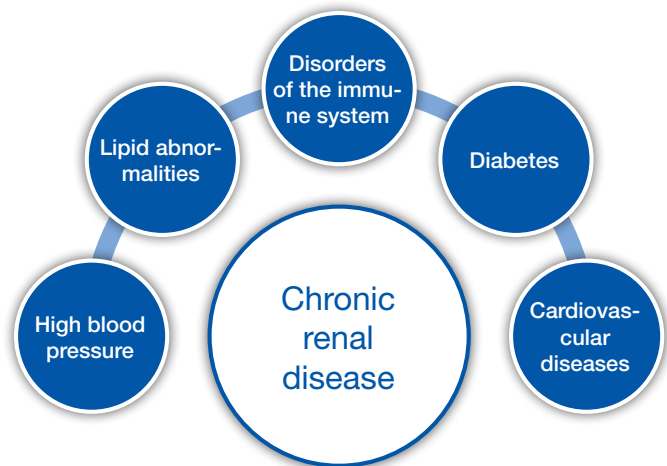
The optically opaque aluminum vial is sealed with a drying agent plug, which enables a one-hand operation.



## **NEW** CombiScreen® mALB / CREA

Screening of microalbuminuria in people with chronic conditions, that puts them at an increased risk of developing a kidney disease.

- The evaluation of the result is extremely simple and reliable due to the table on the label
- No 24 h sample collection is necessary
- The detection limit of approx. 20 mg/l Albumin offers a screening assay with high sensitivity



## *combi*<sup>®</sup> **screen PLUS**

– with ascorbic acid protection –

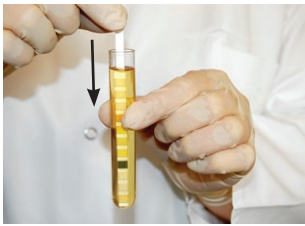
Name	Art.-No.	Cont.	Glucose	Ascorbic Acid	Ketones	Protein	pH-Value	Blood	Nitrite	Leucocytes	Spec. Gravity	Bilirubin	Urobilinogen	Creatinine	Albumin
<b>Glu Plus</b>	94501	50	■												
<b>Nitrit Plus</b>	94506	50							■						
<b>3 Plus</b>	94508 / 94108	50 / 100	■			■	■								
<b>5+N Plus</b>	94535 / 94135	50 / 100	■	■		■	■	■	■						
<b>5+Leuko Plus</b>	94517 / 94117	50 / 100	■			■		■	■	■			■		
<b>9 Plus</b>	94115	100	■	■	■	■	■	■	■			■	■		
<b>9+Leuko Plus</b>	94250 / 94200	50 / 100	■	■	■	■	■	■	■	■		■	■		
<b>10SL Plus</b>	94120	100	■		■	■	■	■	■	■	■	■	■		
<b>VET 11 Plus</b>	94100V	100	■	■	■	■	■	■	■	■	■	■	■		
<b>5SYS Plus<sup>1)</sup></b>	94109	100	■			■		■	■	■					
<b>7SYS Plus<sup>1)</sup></b>	94110 / 94110A	100 / 150	■		■	■	■	■	■	■					
<b>11SYS Plus<sup>2)</sup></b>	94100 / 94150	100 / 150	■	■	■	■	■	■	■	■	■	■	■		
<b>11Auto Plus<sup>3)</sup></b>	95150	150	■	■	■	■	■	■	■	■	■	■	■		
<b>mALB / CREA</b>	94025	25												■	■
<b>Classic line</b>															
<b>GP</b>	93104	100	■			■									
<b>3</b>	93108	100	■			■	■								
<b>GAK</b>	93107	100	■	■	■										
<b>GPK</b>	93105	100	■		■	■									
<b>5 B</b>	93134	100	■		■	■	■	■							
<b>10SL</b>	93120	100	■		■	■	■	■	■	■	■	■	■		
<b>11SYS<sup>2)</sup></b>	93100	100	■	■	■	■	■	■	■	■	■	■	■		

<sup>1)</sup> System test strips to be used with Urilyzer® 100 Pro instruments

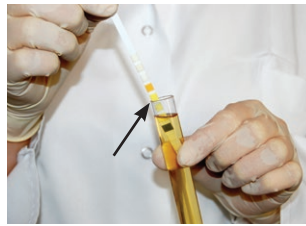
<sup>2)</sup> System test strips to be used with CombiScan® and Urilyzer® 100/500 Pro instruments

<sup>3)</sup> System test strips to be used with Urilyzer® Auto instruments

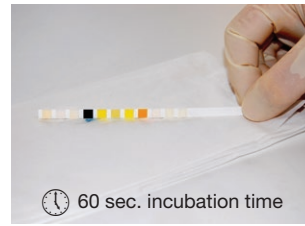
## Manual measurement



- Collect the midstream specimen of urine (preferably morning urine).
- Dip the strip about 2 sec.
- Take care all pads are wet.



- Wipe off excessive urine at the edge of the tube.



- Dip the strip on a tissue and keep it horizontal. Incubation time: 60 sec., Leucocytes up to 120 sec.



- Compare the color of the test pads with the label after 60 sec. In this example Glucose and Ascorbic acid is positive.
- Note the result.

## Automatic measurement



**Urilyzer® 100 Pro** UL0100Pro  
Throughput up to 120 tests/hour  
to be used with urine test strips:

5SYS PLUS	100	94109
7SYS PLUS	100/150	94110/94110A
11SYS PLUS	100/150	94100/94150
11SYS	100/150	93100/93150



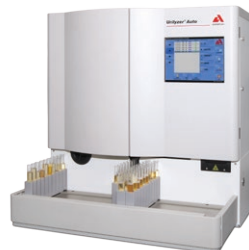
**CombiScan® 500** A93005  
Throughput up to 500 tests/hour  
to be used with urine test strips:

11SYS PLUS	100/150	94100/94150
11SYS	100/150	93100/93150



**Urilyzer® 500 Pro** UL0500Pro  
Throughput up to 500 tests/hour  
to be used with urine test strips:

11SYS PLUS	100/150	94100/94150
11SYS	100/150	93100/93150



**Urilyzer® Auto** ULA240  
Throughput up to 240 tests/hour  
to be used with urine test strips:

11Auto	150	95150
--------	-----	-------

## Quality control



**CombiScreen® Control PN** 93001  
2 x 15 ml  
The dipping control consists of 2 ready-to-use solutions which enables the quality assurance covering the complete clinically relevant range.

Distributor information



**Analyticon Biotechnologies AG**  
Am Muehlenberg 10  
35104 Lichtenfels - Germany  
Phone +49 64 54 79 91-0  
info@analyticon-diagnostics.com  
www.analyticon-diagnostics.com